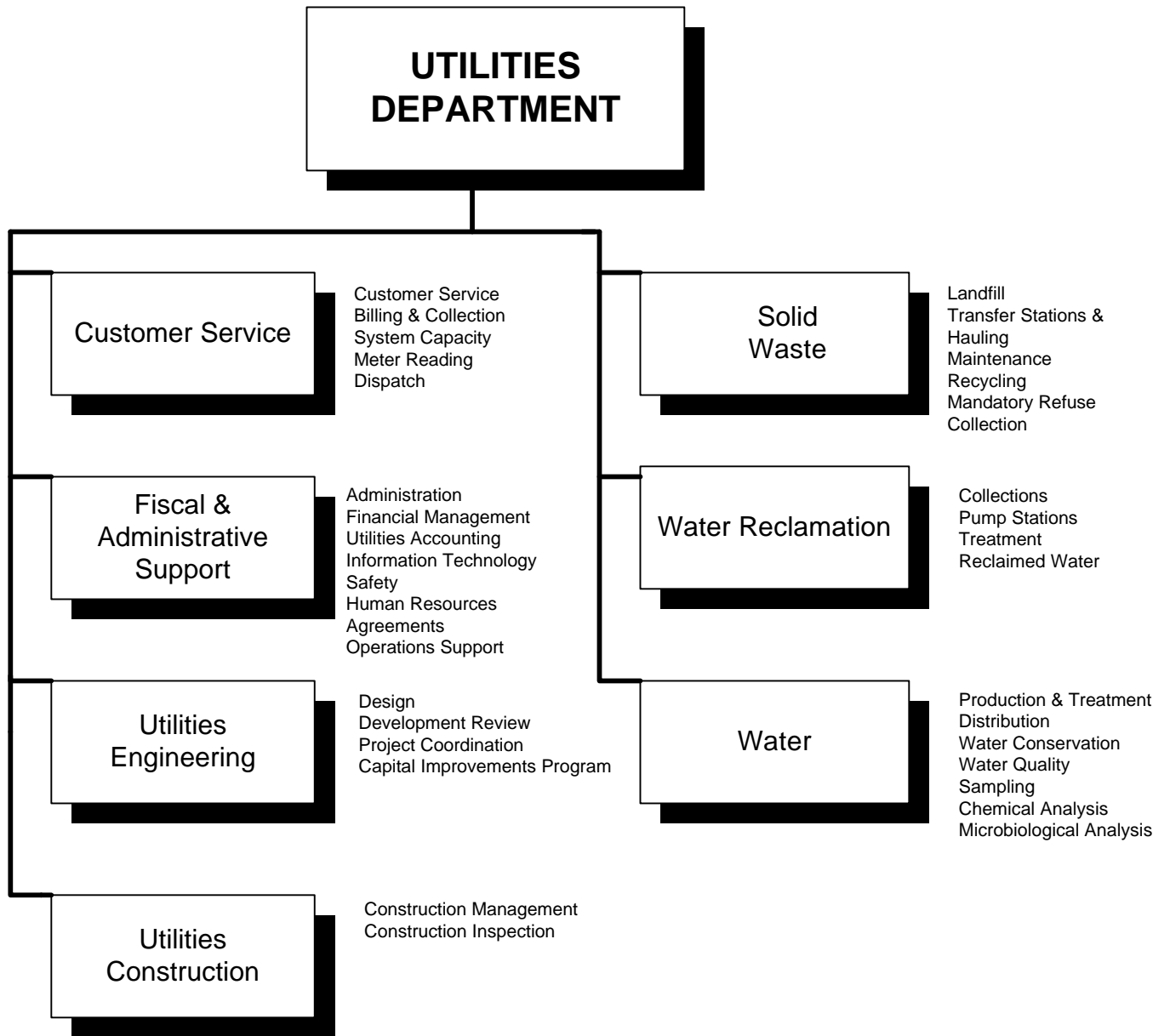


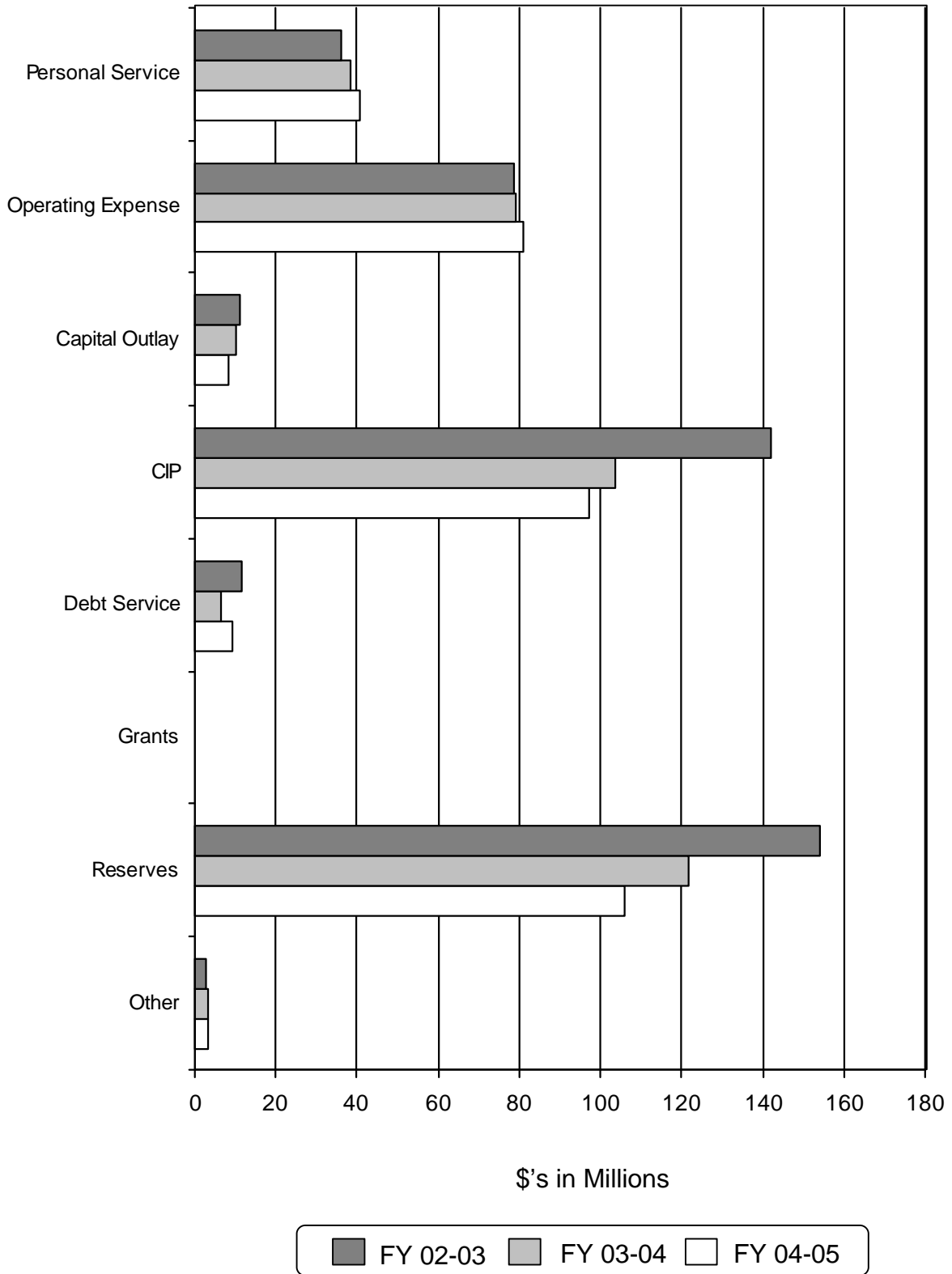
TABLE OF CONTENTS

UTILITIES DEPARTMENT

| | |
|---|-------|
| ORGANIZATIONAL STRUCTURE..... | 12-2 |
| GRAPH - FY 02-03, FY 03-04 AND FY 04-05 EXPENDITURES..... | 12-3 |
| UTILITIES DEPARTMENT | 12-4 |
| PERFORMANCE BASED MEASUREMENT SYSTEM | 12-6 |
| SOLID WASTE | 12-8 |
| WATER UTILITES..... | 12-10 |
| CAPITAL IMPROVEMENTS PROGRAM..... | 12-12 |



Utilities Department



DEPARTMENT: Utilities

| EXPENDITURES | FY 2001-02 | FY 2002-03 | FY 2003-04 | Percent Growth | FY 2004-05 | Percent Growth |
|------------------------|--------------------|----------------------|--------------------|---------------------------|--------------------|---------------------------|
| | Prior Year | Budget | Proposed | | Proposed | |
| | Actual | As of 3/31/03 | Budget | | Budget | |
| Personal Services | 29,860,560 | 36,339,182 | 38,566,073 | 6.1% | 40,701,217 | 5.5% |
| Operating Expenditures | 68,335,162 | 78,834,943 | 79,059,326 | .3% | 80,896,879 | 2.3% |
| Capital Outlay | 5,665,995 | 11,078,922 | 10,100,898 | -8.8% | 8,556,878 | -15.3% |
| Subtotal | 103,861,716 | 126,253,047 | 127,726,297 | 1.2% | 130,154,974 | 1.9% |
| Capital Improvement | 37,443,795 | 142,288,422 | 102,881,910 | -27.7% | 95,592,338 | -7.1% |
| Debt Service | 64,109,899 | 11,402,275 | 6,454,920 | -43.4% | 9,150,075 | 41.8% |
| Grants | 0 | 0 | 0 | .0% | 0 | .0% |
| Reserves | 0 | 154,391,568 | 122,446,528 | -20.7% | 107,754,072 | -12.0% |
| Other | 8,528,785 | 3,090,000 | 3,190,000 | 3.2% | 3,190,000 | .0% |
| Total | 213,944,196 | 437,425,312 | 362,699,655 | -17.1% | 345,841,459 | -4.6% |

PERSONNEL

| | | | | | | |
|----------------------|-----|-----|-----|-----|-----|-----|
| Authorized Positions | 746 | 775 | 782 | .9% | 784 | .3% |
|----------------------|-----|-----|-----|-----|-----|-----|

| FUNDING SOURCE SUMMARY | FY 2001-02 | FY 2002-03 | FY 2003-04 | Percent Growth | FY 2004-05 | Percent Growth |
|-----------------------------------|--------------------|----------------------|--------------------|---------------------------|--------------------|---------------------------|
| | Prior Year | Budget | Proposed | | Proposed | |
| | Actual | As of 3/31/03 | Budget | | Budget | |
| General Fund | 0 | 0 | 0 | .0% | 0 | .0% |
| Special Revenue Funds | 25,250,158 | 45,337,649 | 41,529,870 | -8.4% | 40,241,870 | -3.1% |
| Grant Funds | 195,547 | 455,655 | 134,227 | -70.5% | 134,227 | .0% |
| Impact Fee Funds | 0 | 0 | 0 | .0% | 0 | .0% |
| Enterprise Funds | 188,498,491 | 391,632,008 | 321,035,558 | -18.0% | 305,465,362 | -4.8% |
| Debt Service Funds | 0 | 0 | 0 | .0% | 0 | .0% |
| Capital Project Funds | 0 | 0 | 0 | .0% | 0 | .0% |
| Internal Service Funds | 0 | 0 | 0 | .0% | 0 | .0% |
| All Other Funds | 0 | 0 | 0 | .0% | 0 | .0% |
| Total | 213,944,196 | 437,425,312 | 362,699,655 | -17.1% | 345,841,459 | -4.6% |

PURPOSE STATEMENT:

The Utilities Department is a self-supporting department, responsible for maintaining an efficiently managed utility that provides cost-effective water, wastewater, reclaimed water and solid waste services; protects the public health; complies with regulatory requirements; and is responsive to the needs of the citizens of Orange County.

COMMENTS:

In total, the Utilities Department operating budget for FY 03-04 represents a 1.2% increase above FY 02-03 and the FY 04-05 budget represents an increase of 1.9% above FY 03-04.

Personal Services – The FY 03-04 and FY 04-05 budgets include a 3% salary increase for all eligible employees. In addition, the budgets reflect increases for County health insurance premiums and retirement rates for all classes of employees, as established by the Florida Retirement System. The FY 03-04 and FY 04-05 budgets reflect an increase of 6.1% and 5.5% respectively. Additionally, seven new positions have been requested for FY 03-04 and two new positions have been requested for FY 04-05. New positions are due to new operational and administrative needs of the department.

New Positions FY 03-04:

| | |
|--------------------------------------|-----------------------------|
| Operator IIA/Plant Specialist II (1) | Meter Reader II (1) |
| Operator IIA/Plant Specialist II (1) | CS Field Representative (1) |
| Operation Facility Coordinator (1) | Senior Engineer (1) |
| Administrative Specialist (1) | |

New Positions FY 04-05:

Meter Reader II (1)
CS Field Representative (1)

Operating Expenses – FY 03-04 operating expenses reflect an increase of 0.3%, while the FY 04-05 budget reflects an increase of 2.3%. These variances are within the County budget guidelines and are attributable to efforts to keep operating expenditures as low as possible while continuing to serve existing customers and growth in the Utilities System.

Capital Outlay - The FY 03-04 budget for capital outlay is a reduction of 8.8%, while the FY 04-05 budget is a reduction of 15.3%. These reductions are primarily attributable to the timing of new and replacement equipment acquisition based on operational requirements.

Capital Improvements – Includes funding for Water and Wastewater and Solid Waste Capital Projects. Please refer to the Capital Improvements section for detailed listing of projects.

Debt Service – Includes funding for payment of annual bond debt service, principal and interest on capital lease equipment and the interest on short-term commercial paper. The reduction in the debt service category for FY 03-04 is attributable to the Series 2003 Solid Waste Refunding Revenue Bond issuance, which resulted in a significant reduction in annual debt service in the first year following the transaction. In FY 04-05, debt service increased as the full payment of principal and interest related to the refunding takes effect.

Reserves – Includes reserves restricted from use due to bond covenants, reserves to fund future capital projects, reserves to fund rate stabilization, reserves to fund future landfill closure and long-term care, and reserves for contingency.

Other – Reflects the annual interfund transfer to the General Fund and prior year connection fee refunds.

PERFORMANCE MEASUREMENT PROGRAM INFORMATION

Department: Utilities

Program Descriptions:

The **Solid Waste** program is responsible for landfill and transfer station operations; the maintenance and management of active landfill cells; ensuring closure of cells in accordance with local, state and federal regulations; and ensuring the proper long term care associated with cells which have been closed.

The **Water Utilities** program is responsible for the administration, production, and distribution functions of the water utilities system through proper operation and maintenance of the system.

The **Water Reclamation** program is responsible for the administration, collection, pumping, and treatment functions of the wastewater reclaimed water system through proper operation and maintenance of the system.

Comments/Highlights:

Significant accomplishments for FY 02-03 include education related to water conservation, implementation of the Water Reclamation Oil and Grease Program, expansion of the Sand Lake Road Water Reclamation Facility, ongoing effort to refund the Solid Waste Revenue Bonds, continuing design and construction of the new Solid Waste Class I site. A more detailed discussion on some of these accomplishments is provided below:

Water Conservation

Water Conservation projects will include water loss control programs, leak detection/correction programs, educational programs and data collection and documentation required by the Consumptive Use and Water Use permits. Water loss programs will enhance our ability to get the maximum revenue possible for the water produced. Water conservation programs will focus on continued efforts to preserve our water resources in view of future water supply issues and to comply with our Consumptive Use permit.

Oil and Grease Program

The Oil and Grease Prevention Program focuses on smaller commercial establishments, primarily restaurants, to encourage the use of best management practices related to the handling and processing of kitchen waste. The objective of the Oil and Grease Prevention Program is to minimize the introduction of fat-soluble waste, including petroleum-based hydrocarbons, into the county wastewater system. Oil and grease discharged to the wastewater system have been identified as a leading cause of sewer clogs and overflows. The reduction of oil and grease discharges is expected to have a direct environmental benefit by reducing sewer overflows.

Solid Waste Revenue Bonds

The Utility currently has \$56 million in outstanding Solid Waste Revenue Bonds. We are defeasing approximately \$13 million with cash and will be refunding the remaining \$43 million at lower interest rates. The combination of these actions within this transaction (Series 2003 Refunding Revenue Bonds) will reduce annual debt service by approximately \$1.8 million annually, with a net present value savings over the life of the bonds of approximately 10% to 12%.

PERFORMANCE BASED MEASUREMENT SYSTEM

| Department: Utilities | | | | | | |
|---|--|--------------------|--------------------------------|--------------------|--------------------|--------------------|
| Major Services and Performance Measures | | FY 01-02 Actual | FY 02-03 (As of 3/31/03) | FY 02-03 Target | FY 03-04 Target | FY 04-05 Target |
| 1. Major Service: Solid Waste | | | | | | |
| Workload: | Tonnage of Solid Waste Delivered to the Landfill Total O&M Expenses (in millions) | 859,751 \$14.2 | 461,850 \$6.6 | 844,841 \$15.3 | 864,491 \$16.4 | 913,679 \$16.8 |
| Effectiveness: | Note - New Measures are being developed for this Section | | | | | |
| Efficiency: | Cost Per Ton Processed | \$16.48 | \$14.30 | \$18.16 | \$18.97 | \$18.44 |
| 2. Major Service: Water Production | | | | | | |
| Workload: | Water Produced in Billions of Gallons Water Production O&M Expenses (in millions) | 17.2 \$7.2 | 8.6 \$3.5 | 18.4 \$6.6 | 18.7 \$8.0 | 19.6 \$8.2 |
| Effectiveness: | Note - New Measures are being developed for this Section | | | | | |
| Efficiency: | Cost Per 1,000 Gallons of Water Produced | \$0.42 | \$0.40 | \$0.36 | \$0.43 | \$0.42 |
| 3. Major Service: Water Distribution | | | | | | |
| Workload: | Miles of Water Main Water Distribution O&M Expenses (in millions) | 1,404 \$3.1 | 1,575 \$1.4 | 1,462 \$3.6 | 1,725 \$3.9 | 1,800 \$4.0 |
| Efficiency: | Cost Per Mile of Water Main | \$2,186 | \$909 | \$2,446 | \$2,243 | \$2,226 |
| 4. Major Service: Wastewater Collections | | | | | | |
| Workload: | Miles of Sewer Lines Wastewater Collections O&M Expenses (in millions) | 1,565 \$4.5 | 1,654 \$2.4 | 1,600 \$6.3 | 1,735 \$6.9 | 1,780 \$7.1 |
| Efficiency: | Cost Per Mile of Sewer Main | \$2,867 | \$1,467 | \$3,960 | \$4,005 | \$4,012 |
| 5. Major Service: Wastewater Treatment | | | | | | |
| Workload: | Wastewater Treated in Billions of Gallons Wastewater Treatment O&M Expenses (in millions) | 16.1 \$14.6 | 8.3 \$5.4 | 16.4 \$17.7 | 20.4 \$18.6 | 21.6 \$18.0 |
| Efficiency: | Cost of 1,000 Gallons Per Wastewater Treated | \$0.91 | \$0.66 | \$1.08 | \$0.91 | \$0.83 |

DIVISION: Solid Waste

| EXPENDITURES | FY 2001-02 | FY 2002-03 | FY 2003-04 | Percent Growth | FY 2004-05 | Percent Growth |
|------------------------|------------|---------------|-------------|-------------------|-------------|-------------------|
| | Prior Year | Budget | Proposed | | Proposed | |
| | Actual | As of 3/31/03 | Budget | | Budget | |
| Personal Services | 6,193,819 | 6,539,783 | 7,135,783 | 9.1% | 7,466,027 | 4.6% |
| Operating Expenditures | 33,382,897 | 34,996,975 | 35,560,111 | 1.6% | 36,781,541 | 3.4% |
| Capital Outlay | 1,744,856 | 2,895,709 | 3,088,041 | 6.6% | 2,159,731 | -30.1% |
| Subtotal | 41,321,572 | 44,432,467 | 45,783,935 | 3.0% | 46,407,299 | 1.4% |
| Capital Improvement | 2,843,512 | 29,810,819 | 17,306,099 | -41.9% | 11,291,026 | -34.8% |
| Debt Service | 5,417,263 | 6,110,079 | 1,841,324 | -69.9% | 4,181,313 | 127.1% |
| Grants | 0 | 0 | 0 | .0% | 0 | .0% |
| Reserves | 0 | 73,330,161 | 61,303,230 | -16.4% | 56,779,379 | -7.4% |
| Other | 379,967 | 0 | 0 | .0% | 0 | .0% |
| Total | 49,962,314 | 153,683,526 | 126,234,588 | -17.9% | 118,659,017 | -6.0% |

PERSONNEL

| | | | | | | |
|----------------------|-----|-----|-----|-----|-----|-----|
| Authorized Positions | 148 | 148 | 148 | .0% | 148 | .0% |
|----------------------|-----|-----|-----|-----|-----|-----|

| FUNDING SOURCE SUMMARY | FY 2001-02 | FY 2002-03 | FY 2003-04 | Percent Growth | FY 2004-05 | Percent Growth |
|---------------------------|------------|---------------|-------------|-------------------|-------------|-------------------|
| | Prior Year | Budget | Proposed | | Proposed | |
| | Actual | As of 3/31/03 | Budget | | Budget | |
| General Fund | 0 | 0 | 0 | .0% | 0 | .0% |
| Special Revenue Funds | 25,250,158 | 45,337,649 | 41,529,870 | -8.4% | 40,241,870 | -3.1% |
| Grant Funds | 195,547 | 340,655 | 134,227 | -60.6% | 134,227 | .0% |
| Impact Fee Funds | 0 | 0 | 0 | .0% | 0 | .0% |
| Enterprise Funds | 24,516,609 | 108,005,222 | 84,570,491 | -21.7% | 78,282,920 | -7.4% |
| Debt Service Funds | 0 | 0 | 0 | .0% | 0 | .0% |
| Capital Project Funds | 0 | 0 | 0 | .0% | 0 | .0% |
| Internal Service Funds | 0 | 0 | 0 | .0% | 0 | .0% |
| All Other Funds | 0 | 0 | 0 | .0% | 0 | .0% |
| Total | 49,962,314 | 153,683,526 | 126,234,588 | -17.9% | 118,659,017 | -6.0% |

PURPOSE STATEMENT:

The Solid Waste Division is responsible for landfill and transfer station operations, the maintenance and management of active landfill cells, ensuring closure of cells in accordance with local, state and federal regulations, and ensuring the proper long term care associated with cells which have been closed. The Mandatory Refuse Program, within the Solid Waste Division, is responsible for ensuring the efficient and cost-effective collection of residential refuse in unincorporated Orange County, and education and service response to customers. The Residential Recycling Program, within the Solid Waste Division, provides a system to substantially reduce the volume of material being disposed of in the landfill, and ensures high quality recycling collection services to the citizens of Orange County.

COMMENTS:

The Solid Waste Division budget is comprised of the three funds, which reside in this division. The combined operating budget represents an increase of 3.0% in FY 03-04 and an increase of 1.4% in FY 04-05.

Personal Services – The FY 03-04 and FY 04-05 budgets include a 3% salary increase for all eligible employees. In addition, the budgets reflect increases for County health insurance premiums and retirement rates for all classes of employees, as established by the Florida Retirement System. The FY 03-04 increased primarily due to significant increases in retirement contributions and overtime to cope with operational demands. No new positions are requested in FY 03-04 or FY 04-05.

Operating Expenses – The FY 03-04 and FY 04-05 budgets for the Solid Waste Division have increased approximately 1.6% and 3.4% respectively. These increases are a result of the indirect cost allocation being applied for the first time and an increase to the payment to contract haulers, which is related primarily to Mandatory Refuse Program customer growth and the CPI indexing terms of the Haulers contract.

Capital Outlay – The FY 03-04 budget increase of 6.6% is attributable to the procurement of heavy equipment, rolling stock, and computer equipment. The FY 04-05 budget is a reduction of 30.1%. These variances are primarily attributable to the timing of new and replacement equipment acquisitions based on operational requirements.

Capital Improvements – Please refer to the Capital Improvements section for detailed listing of projects.

Debt Service – The budget for Solid Waste provides funding for payment of annual bond debt service. The reduction in the debt service category for FY 03-04 is attributable to the Series 2003 Solid Waste Refunding Revenue Bond issuance which resulted in the a significant reduction in annual debt service in the first year following the transaction. In FY 04-05, debt service increased as the full payment of principal and interest related to the refunding takes effect.

Reserves – Reserves for Solid Waste include reserves that are restricted from use due to bond covenants, reserves for future capital projects, reserves to fund future landfill closure and long term care activities, and reserves for contingency. Reserves for the Mandatory Refuse Program and the Residential Recycling Program include reserves for contingency and restricted reserves to ensure availability of sufficient operating funds for the first three months of each fiscal year prior to the receipt of revenues through the Tax Collector.

DIVISION: Water Utilities

| EXPENDITURES | FY 2001-02 | FY 2002-03 | FY 2003-04 | Percent Growth | FY 2004-05 | Percent Growth |
|------------------------|-------------|---------------|-------------|-------------------|-------------|-------------------|
| | Prior Year | Budget | Proposed | | Proposed | |
| | Actual | As of 3/31/03 | Budget | | Budget | |
| Personal Services | 23,666,741 | 29,799,399 | 31,430,290 | 5.5% | 33,235,190 | 5.7% |
| Operating Expenditures | 34,952,265 | 43,837,968 | 43,499,215 | -.8% | 44,115,338 | 1.4% |
| Capital Outlay | 3,921,138 | 8,183,213 | 7,012,857 | -14.3% | 6,397,147 | -8.8% |
| Subtotal | 62,540,144 | 81,820,580 | 81,942,362 | 0.1% | 83,747,675 | 2.2% |
| Capital Improvement | 34,600,283 | 112,477,603 | 85,575,811 | -23.9% | 84,301,312 | -1.5% |
| Debt Service | 58,692,637 | 5,292,196 | 4,613,596 | -12.8% | 4,968,762 | 7.7% |
| Grants | 0 | 0 | 0 | .0% | 0 | .0% |
| Reserves | 0 | 81,061,407 | 61,143,298 | -24.6% | 50,974,693 | -16.6% |
| Other | 8,148,818 | 3,090,000 | 3,190,000 | 3.2% | 3,190,000 | .0% |
| Total | 163,981,883 | 283,741,786 | 236,465,067 | -16.7% | 227,182,442 | -3.9% |

PERSONNEL

| | | | | | | |
|----------------------|-----|-----|-----|------|-----|-----|
| Authorized Positions | 598 | 627 | 634 | 1.1% | 636 | .3% |
|----------------------|-----|-----|-----|------|-----|-----|

| FUNDING SOURCE SUMMARY | FY 2001-02 | FY 2002-03 | FY 2003-04 | Percent Growth | FY 2004-05 | Percent Growth |
|---------------------------|-------------|---------------|-------------|-------------------|-------------|-------------------|
| | Prior Year | Budget | Proposed | | Proposed | |
| | Actual | As of 3/31/03 | Budget | | Budget | |
| General Fund | 0 | 0 | 0 | .0% | 0 | .0% |
| Special Revenue Funds | 0 | 0 | 0 | .0% | 0 | .0% |
| Grant Funds | 0 | 115,000 | 0 | -100.0% | 0 | .0% |
| Impact Fee Funds | 0 | 0 | 0 | .0% | 0 | .0% |
| Enterprise Funds | 163,981,883 | 283,626,786 | 236,465,067 | -16.6% | 227,182,442 | -3.9% |
| Debt Service Funds | 0 | 0 | 0 | .0% | 0 | .0% |
| Capital Project Funds | 0 | 0 | 0 | .0% | 0 | .0% |
| Internal Service Funds | 0 | 0 | 0 | .0% | 0 | .0% |
| All Other Funds | 0 | 0 | 0 | .0% | 0 | .0% |
| Total | 163,981,883 | 283,741,786 | 236,465,067 | -16.7% | 227,182,442 | -3.9% |

PURPOSE STATEMENT:

The divisions within the Water Utilities System provide residential and commercial water and wastewater utilities services and reclaimed water services to customers in various areas of Orange County. Activities of these divisions include operation and maintenance of water, wastewater, and reclaimed water facilities, construction management and engineering of capital improvements, laboratory analysis, customer service and fiscal and administrative support.

COMMENTS:

The Water Utilities System’s combined operating budget represents an increase of 0.1% in FY 03-04 and an increase of 2.2% in FY 04-05.

Personal Services – The FY 03-04 and FY 04-05 budgets include a 3% salary increase for all eligible employees. In addition, the budgets reflect increases for County health insurance premiums and retirement rates for all classes of employees, as established by the Florida Retirement System. The FY 03-04 and FY 04-05 budgets reflect an increase of 5.5% and 5.7% respectively. Seven new positions have been requested for FY 03-04 and two new positions have been requested for FY 04-05.

New Positions FY 03-04:

| | |
|--------------------------------------|-----------------------------|
| Operator IIA/Plant Specialist II (1) | Meter Reader II (1) |
| Operator IIA/Plant Specialist II (1) | CS Field Representative (1) |
| Operation Facility Coordinator (1) | Senior Engineer (1) |
| Administrative Specialist (1) | |

New Positions FY 04-05:

Meter Reader II (1)
CS Field Representative (1)

Operating Expenses – The FY 03-04 budget reflects a reduction of 0.8%, while the FY 04-05 budget reflects an increase of 1.4%. These variances are attributable to efforts to keep operating expenditures as low as possible while continuing to serve existing customers and growth in the Water Utilities System.

Capital Outlay – The FY 03-04 budget for capital outlay is a reduction of 14.3%, while the FY 04-05 budget is a reduction of 8.8%. These reductions are primarily attributable to the timing of new and replacement equipment acquisition based on operational requirements.

Capital Improvements – Includes funding for Water & Wastewater capital projects. A detailed list of the projects is presented in the CIP Summary.

Debt Service – Includes funding for payment of annual bond debt service, principal and interest on capital lease equipment, and the interest on short-term commercial paper.

Reserves – Included are required debt service reserves, reserves to fund future capital projects, reserves to fund rate stabilization, and reserves for contingency.

Other – Includes the annual interfund transfer to the general fund for FY 03-04 and FY 04-05. The category also reflects a budget for the refund of prior year connection fees.

**Fiscal Years
03-04 and 04-05**

CAPITAL IMPROVEMENTS PROGRAM

Projects under the direction of

Utilities Department

The Utilities Department is responsible for the collection and disposal of solid waste, the collection and treatment of wastewater, and the treatment and disbursement of potable water. A variety of capital projects are planned for the next five years including upgrading and expanding Solid Waste, Water and Wastewater facilities.

| | <u>Proposed FY 03-04</u> | <u>Proposed FY 04-05</u> |
|------------------|------------------------------|------------------------------|
| Water | \$26,022,000 | \$32,126,000 |
| Wastewater | 47,436,010 | 37,681,468 |
| Solid Waste | 17,306,099 | 11,291,026 |
| Other | <u>12,763,358</u> | <u>14,493,844</u> |
| Department Total | \$102,881,910 | \$95,592,338 |

Funding Mechanism:

Funding for Solid Waste projects is provided from system revenues.

Funding for Water and Wastewater utility system projects in FY 03-04 and FY 04-05 is provided from system revenues and commercial paper.

**FIVE YEAR CAPITAL IMPROVEMENTS PROGRAM - BY DEPARTMENT / DIVISION
FY 2003/04 - FY 2007/08 PROPOSED BUDGET**

| <i>ORG</i> | <i>FUND</i> | <i>PROJECT NAME</i> | <i>PRIOR YEARS EXPENDITURES</i> | <i>CURRENT BUDGET @ 6/30/03 FY 02-03</i> | <i>PROPOSED BUDGET FY 03-04</i> | <i>PROPOSED BUDGET FY 04-05</i> | <i>REQ BUDGET FY 05-06</i> | <i>REQ BUDGET FY 06-07</i> | <i>REQ BUDGET FY 07-08</i> | <i>REQ FUTURE YEARS</i> | <i>PROPOSED PROJECT COST</i> |
|------------------|-------------|--------------------------------|---|--|---|---|------------------------------------|------------------------------------|------------------------------------|---------------------------------|--------------------------------------|
| UTILITIES | | | | | | | | | | | |
| OTHER | | | | | | | | | | | |
| <i>1409</i> | 4420 | CUSTOMER INFO & BILLING SYSTEM | 2,616,332 | 404,100 | 2,647,100 | 2,957,400 | 2,881,523 | 0 | 0 | 0 | 11,506,455 |
| | | Org Subtotal | 2,616,332 | 404,100 | 2,647,100 | 2,957,400 | 2,881,523 | 0 | 0 | 0 | 11,506,455 |
| <i>1475</i> | 4420 | DEVELOPER DONATIONS | 0 | 5,000 | 5,000 | 0 | 0 | 0 | 0 | 0 | 10,000 |
| | | Org Subtotal | 0 | 5,000 | 5,000 | 0 | 0 | 0 | 0 | 0 | 10,000 |
| <i>1476</i> | 4420 | DEVELOPER DONATIONS | 0 | 20,000 | 15,000 | 5,000 | 0 | 0 | 0 | 0 | 40,000 |
| | | Org Subtotal | 0 | 20,000 | 15,000 | 5,000 | 0 | 0 | 0 | 0 | 40,000 |
| <i>1477</i> | 4420 | DEVELOPER DONATIONS | 11,644 | 25,000 | 30,000 | 20,000 | 15,000 | 5,000 | 0 | 0 | 106,644 |
| | | Org Subtotal | 11,644 | 25,000 | 30,000 | 20,000 | 15,000 | 5,000 | 0 | 0 | 106,644 |
| <i>1478</i> | 4420 | DEVELOPER DONATIONS | 0 | 10,000 | 75,000 | 50,000 | 45,000 | 20,000 | 0 | 0 | 200,000 |
| | | Org Subtotal | 0 | 10,000 | 75,000 | 50,000 | 45,000 | 20,000 | 0 | 0 | 200,000 |
| <i>1479</i> | 4420 | DEVELOPER DONATIONS | 8,946 | 50,000 | 100,000 | 100,000 | 75,000 | 50,000 | 0 | 0 | 383,946 |
| | | Org Subtotal | 8,946 | 50,000 | 100,000 | 100,000 | 75,000 | 50,000 | 0 | 0 | 383,946 |
| <i>1499</i> | 4420 | MIS NETWORK/WORK ORDER SYSTE | 3,760,213 | 1,871,009 | 3,840,701 | 2,536,444 | 2,098,367 | 1,516,080 | 1,936,124 | 0 | 17,558,938 |
| | | Org Subtotal | 3,760,213 | 1,871,009 | 3,840,701 | 2,536,444 | 2,098,367 | 1,516,080 | 1,936,124 | 0 | 17,558,938 |
| <i>1513</i> | 4420 | DEVELOPER PROJECTS | 35,422 | 100,000 | 100,000 | 100,000 | 100,000 | 75,000 | 0 | 0 | 510,422 |
| | | Org Subtotal | 35,422 | 100,000 | 100,000 | 100,000 | 100,000 | 75,000 | 0 | 0 | 510,422 |
| <i>1522</i> | 4420 | DEVELOPER PROJECTS | 376,681 | 50,000 | 125,000 | 100,000 | 100,000 | 75,000 | 75,000 | 0 | 901,681 |
| | | Org Subtotal | 376,681 | 50,000 | 125,000 | 100,000 | 100,000 | 75,000 | 75,000 | 0 | 901,681 |
| <i>1523</i> | 4420 | DEVELOPER PROJECTS | 377,773 | 125,000 | 125,000 | 125,000 | 115,000 | 100,000 | 150,000 | 0 | 1,117,773 |
| | | Org Subtotal | 377,773 | 125,000 | 125,000 | 125,000 | 115,000 | 100,000 | 150,000 | 0 | 1,117,773 |
| <i>1524</i> | 4420 | DEVELOPER PROJECTS | 6,472 | 15,000 | 25,000 | 100,000 | 150,000 | 275,000 | 375,000 | 0 | 946,472 |
| | | Org Subtotal | 6,472 | 15,000 | 25,000 | 100,000 | 150,000 | 275,000 | 375,000 | 0 | 946,472 |

12-13

**FIVE YEAR CAPITAL IMPROVEMENTS PROGRAM - BY DEPARTMENT / DIVISION
FY 2003/04 - FY 2007/08 PROPOSED BUDGET**

| <i>ORG</i> | <i>FUND</i> | <i>PROJECT NAME</i> | <i>PRIOR YEARS EXPENDITURES</i> | <i>CURRENT BUDGET @ 6/30/03 FY 02-03</i> | <i>PROPOSED BUDGET FY 03-04</i> | <i>PROPOSED BUDGET FY 04-05</i> | <i>REQ BUDGET FY 05-06</i> | <i>REQ BUDGET FY 06-07</i> | <i>REQ BUDGET FY 07-08</i> | <i>REQ FUTURE YEARS</i> | <i>PROPOSED PROJECT COST</i> |
|--------------------|-------------|-------------------------------|---|--|---|---|------------------------------------|------------------------------------|------------------------------------|---------------------------------|--------------------------------------|
| <i>1525</i> | 4420 | WATER & MASTER PLAN | 3,502,513 | 685,588 | 110,000 | 100,000 | 100,000 | 100,000 | 100,000 | 190,000 | 4,888,101 |
| | | Org Subtotal | 3,502,513 | 685,588 | 110,000 | 100,000 | 100,000 | 100,000 | 100,000 | 190,000 | 4,888,101 |
| <i>1535</i> | 4420 | UTIL GIS MIGRATION TO ESRI | 586,743 | 871,000 | 825,000 | 600,000 | 600,000 | 600,000 | 600,000 | 0 | 4,682,743 |
| | | Org Subtotal | 586,743 | 871,000 | 825,000 | 600,000 | 600,000 | 600,000 | 600,000 | 0 | 4,682,743 |
| <i>1537</i> | 4420 | PARKS MANOR UT ACQUISITION | 87,983 | 500,000 | 0 | 0 | 0 | 0 | 0 | 0 | 587,983 |
| | | Org Subtotal | 87,983 | 500,000 | 0 | 0 | 0 | 0 | 0 | 0 | 587,983 |
| <i>1543</i> | 4420 | UTILITY OPERATION CENTER EAST | 170,340 | 1,000,000 | 4,000,000 | 7,700,000 | 0 | 0 | 0 | 0 | 12,870,340 |
| | | Org Subtotal | 170,340 | 1,000,000 | 4,000,000 | 7,700,000 | 0 | 0 | 0 | 0 | 12,870,340 |
| | | DIVISION SUBTOTAL | 11,541,063 | 5,731,697 | 12,022,801 | 14,493,844 | 6,279,890 | 2,816,080 | 3,236,124 | 190,000 | 56,311,499 |
| SOLID WASTE | | | | | | | | | | | |
| <i>1061</i> | 4410 | PORTER MODIFICATIONS | 2,492,744 | 40,000 | 22,000 | 22,000 | 50,000 | 200,000 | 22,000 | 1,271,642 | 4,120,386 |
| | | Org Subtotal | 2,492,744 | 40,000 | 22,000 | 22,000 | 50,000 | 200,000 | 22,000 | 1,271,642 | 4,120,386 |
| <i>1065</i> | 4410 | MCLEOD T S-VEH WASH | 1,525,280 | 400,000 | 22,000 | 22,000 | 50,000 | 200,000 | 22,000 | 1,172,007 | 3,413,287 |
| | | Org Subtotal | 1,525,280 | 400,000 | 22,000 | 22,000 | 50,000 | 200,000 | 22,000 | 1,172,007 | 3,413,287 |
| <i>1069</i> | 4410 | LDFILL-ADMIN BLDG | 53,023 | 160,000 | 50,000 | 0 | 100,000 | 0 | 0 | 1,930,822 | 2,293,845 |
| | | Org Subtotal | 53,023 | 160,000 | 50,000 | 0 | 100,000 | 0 | 0 | 1,930,822 | 2,293,845 |
| <i>1077</i> | 4410 | LANDFILL PERMITTING | 865,562 | 140,000 | 0 | 200,000 | 0 | 50,000 | 0 | 618,932 | 1,874,494 |
| | | Org Subtotal | 865,562 | 140,000 | 0 | 200,000 | 0 | 50,000 | 0 | 618,932 | 1,874,494 |
| <i>1081</i> | 4410 | CELLS A-K CLOSURE & LT CARE | 10,103,848 | 103,277 | 118,680 | 120,694 | 122,741 | 124,824 | 126,942 | 4,083,342 | 14,904,348 |
| | | Org Subtotal | 10,103,848 | 103,277 | 118,680 | 120,694 | 122,741 | 124,824 | 126,942 | 4,083,342 | 14,904,348 |
| <i>1083</i> | 4410 | N W TRANSFER STATION | 1,838,256 | 0 | 100,000 | 600,000 | 2,000,000 | 6,000,000 | 0 | 1,500,000 | 12,038,256 |
| | | Org Subtotal | 1,838,256 | 0 | 100,000 | 600,000 | 2,000,000 | 6,000,000 | 0 | 1,500,000 | 12,038,256 |
| <i>1086</i> | 4410 | CELL 7B/8 CLOSURE & LT CARE | 9,501,430 | 1,184,801 | 3,730,300 | 277,481 | 6,511,474 | 170,924 | 173,824 | 8,776,027 | 30,326,261 |
| | | Org Subtotal | 9,501,430 | 1,184,801 | 3,730,300 | 277,481 | 6,511,474 | 170,924 | 173,824 | 8,776,027 | 30,326,261 |

12-14

**FIVE YEAR CAPITAL IMPROVEMENTS PROGRAM - BY DEPARTMENT / DIVISION
FY 2003/04 - FY 2007/08 PROPOSED BUDGET**

| <i>ORG</i> | <i>FUND</i> | <i>PROJECT NAME</i> | <i>PRIOR YEARS EXPENDITURES</i> | <i>CURRENT BUDGET @ 6/30/03 FY 02-03</i> | <i>PROPOSED BUDGET FY 03-04</i> | <i>PROPOSED BUDGET FY 04-05</i> | <i>REQ BUDGET FY 05-06</i> | <i>REQ BUDGET FY 06-07</i> | <i>REQ BUDGET FY 07-08</i> | <i>REQ FUTURE YEARS</i> | <i>PROPOSED PROJECT COST</i> |
|------------|-------------|--------------------------------|---|--|---|---|------------------------------------|------------------------------------|------------------------------------|---------------------------------|--------------------------------------|
| 1091 | 4410 | CELLS PRIOR 1985 L-T CARE | 61,355 | 39,378 | 43,119 | 43,851 | 44,595 | 45,352 | 46,121 | 1,298,534 | 1,622,305 |
| | | Org Subtotal | 61,355 | 39,378 | 43,119 | 43,851 | 44,595 | 45,352 | 46,121 | 1,298,534 | 1,622,305 |
| 1096 | 4410 | LINERS/STWTR IMP-FUTURE CELLS | 4,079,377 | 12,000,000 | 10,000,000 | 8,500,000 | 600,000 | 0 | 0 | 0 | 35,179,377 |
| | | Org Subtotal | 4,079,377 | 12,000,000 | 10,000,000 | 8,500,000 | 600,000 | 0 | 0 | 0 | 35,179,377 |
| 1097 | 4410 | LANDFILL SURFACE WATER TRTMEN | 528,518 | 125,000 | 1,200,000 | 50,000 | 50,000 | 50,000 | 50,000 | 0 | 2,053,518 |
| | | Org Subtotal | 528,518 | 125,000 | 1,200,000 | 50,000 | 50,000 | 50,000 | 50,000 | 0 | 2,053,518 |
| 1099 | 4410 | CLOSURE & LT CARE-CLASS III #1 | 4,203,192 | 150,000 | 120,000 | 445,000 | 2,555,000 | 120,000 | 3,400,000 | 3,882,244 | 14,875,436 |
| | | Org Subtotal | 4,203,192 | 150,000 | 120,000 | 445,000 | 2,555,000 | 120,000 | 3,400,000 | 3,882,244 | 14,875,436 |
| 1100 | 4410 | ABOVE GROUND FUEL STORAGE SY | 0 | 49,055 | 0 | 0 | 0 | 0 | 0 | 0 | 49,055 |
| | | Org Subtotal | 0 | 49,055 | 0 | 0 | 0 | 0 | 0 | 0 | 49,055 |
| 1102 | 4410 | LANDFILL LEACHATE PUMP STATION | 362,879 | 945 | 0 | 200,000 | 0 | 0 | 0 | 0 | 563,824 |
| | | Org Subtotal | 362,879 | 945 | 0 | 200,000 | 0 | 0 | 0 | 0 | 563,824 |
| 1103 | 4410 | CELL 10 LINERS & STWTR INPROV | 0 | 0 | 0 | 0 | 400,000 | 1,130,000 | 1,500,000 | 16,983,000 | 20,013,000 |
| | | Org Subtotal | 0 | 0 | 0 | 0 | 400,000 | 1,130,000 | 1,500,000 | 16,983,000 | 20,013,000 |
| 1104 | 1047 | MATERIALS RECOVERY FACILITY | 0 | 3,000,000 | 1,500,000 | 0 | 0 | 0 | 0 | 0 | 4,500,000 |
| | | Org Subtotal | 0 | 3,000,000 | 1,500,000 | 0 | 0 | 0 | 0 | 0 | 4,500,000 |
| 1105 | 4410 | SOLID WASTE MASTER PLAN | 0 | 290,000 | 400,000 | 610,000 | 0 | 0 | 0 | 0 | 1,300,000 |
| | | Org Subtotal | 0 | 290,000 | 400,000 | 610,000 | 0 | 0 | 0 | 0 | 1,300,000 |
| 1106 | 4410 | CLASS 3 WASTE DISPOSAL CELL 2 | 0 | 0 | 0 | 200,000 | 300,000 | 2,000,000 | 3,000,000 | 0 | 5,500,000 |
| | | Org Subtotal | 0 | 0 | 0 | 200,000 | 300,000 | 2,000,000 | 3,000,000 | 0 | 5,500,000 |
| | | DIVISION SUBTOTAL | 35,615,464 | 17,682,456 | 17,306,099 | 11,291,026 | 12,783,810 | 10,091,100 | 8,340,887 | 41,516,550 | 154,627,392 |
| WASTEWATER | | | | | | | | | | | |
| 1411 | 4420 | SOUTH SVC AREA EFFLUENT REUSE | 23,161,508 | 1,144,379 | 1,273,000 | 880,000 | 460,000 | 1,965,000 | 3,795,000 | 7,155,493 | 39,834,380 |
| | | Org Subtotal | 23,161,508 | 1,144,379 | 1,273,000 | 880,000 | 460,000 | 1,965,000 | 3,795,000 | 7,155,493 | 39,834,380 |

12-15

**FIVE YEAR CAPITAL IMPROVEMENTS PROGRAM - BY DEPARTMENT / DIVISION
FY 2003/04 - FY 2007/08 PROPOSED BUDGET**

| <i>ORG</i> | <i>FUND</i> | <i>PROJECT NAME</i> | <i>PRIOR YEARS EXPENDITURES</i> | <i>CURRENT BUDGET @ 6/30/03 FY 02-03</i> | <i>PROPOSED BUDGET FY 03-04</i> | <i>PROPOSED BUDGET FY 04-05</i> | <i>REQ BUDGET FY 05-06</i> | <i>REQ BUDGET FY 06-07</i> | <i>REQ BUDGET FY 07-08</i> | <i>REQ FUTURE YEARS</i> | <i>PROPOSED PROJECT COST</i> |
|------------|-------------|-------------------------------|---|--|---|---|------------------------------------|------------------------------------|------------------------------------|---------------------------------|--------------------------------------|
| 1416 | 4420 | PUMP STAT MONITORS/C-W | 6,898,819 | 2,000,000 | 1,730,000 | 2,000,000 | 1,800,000 | 800,000 | 1,000,000 | 4,800,000 | 21,028,819 |
| | | Org Subtotal | 6,898,819 | 2,000,000 | 1,730,000 | 2,000,000 | 1,800,000 | 800,000 | 1,000,000 | 4,800,000 | 21,028,819 |
| 1424 | 4420 | DEMOLITION - ABAND WW | 1,003,303 | 91,700 | 326,400 | 100,000 | 200,000 | 0 | 0 | 0 | 1,721,403 |
| | | Org Subtotal | 1,003,303 | 91,700 | 326,400 | 100,000 | 200,000 | 0 | 0 | 0 | 1,721,403 |
| 1425 | 4420 | EASTERLY WW IV/EOC | 17,041,109 | 425,000 | 750,000 | 550,000 | 0 | 0 | 0 | 2,207,298 | 20,973,407 |
| | | Org Subtotal | 17,041,109 | 425,000 | 750,000 | 550,000 | 0 | 0 | 0 | 2,207,298 | 20,973,407 |
| 1427 | 4420 | COLLECT REHAB/C-W | 12,479,425 | 3,750,000 | 2,900,000 | 1,840,000 | 800,000 | 100,000 | 100,000 | 4,864,090 | 26,833,515 |
| | | Org Subtotal | 12,479,425 | 3,750,000 | 2,900,000 | 1,840,000 | 800,000 | 100,000 | 100,000 | 4,864,090 | 26,833,515 |
| 1428 | 4420 | PUMPING REHAB/REPLACEMENT | 12,421,088 | 1,089,118 | 4,834,750 | 4,600,000 | 3,090,000 | 1,000,000 | 1,000,000 | 0 | 28,034,956 |
| | | Org Subtotal | 12,421,088 | 1,089,118 | 4,834,750 | 4,600,000 | 3,090,000 | 1,000,000 | 1,000,000 | 0 | 28,034,956 |
| 1432 | 4420 | TRANSP RELOC WW/C-W | 11,057,664 | 975,000 | 1,659,000 | 1,372,000 | 815,000 | 0 | 0 | 0 | 15,878,664 |
| | | Org Subtotal | 11,057,664 | 975,000 | 1,659,000 | 1,372,000 | 815,000 | 0 | 0 | 0 | 15,878,664 |
| 1434 | 4420 | NW SUBREG-PH II/NWOC | 21,390,874 | 115,000 | 200,000 | 200,000 | 0 | 0 | 0 | 0 | 21,905,874 |
| | | Org Subtotal | 21,390,874 | 115,000 | 200,000 | 200,000 | 0 | 0 | 0 | 0 | 21,905,874 |
| 1435 | 4420 | NW SUBREG PH III/NWOC | 0 | 0 | 0 | 0 | 100,000 | 300,000 | 300,000 | 14,400,000 | 15,100,000 |
| | | Org Subtotal | 0 | 0 | 0 | 0 | 100,000 | 300,000 | 300,000 | 14,400,000 | 15,100,000 |
| 1436 | 4420 | SAND LK RD PH IV | 24,202,921 | 20,005,000 | 13,450,000 | 9,000,000 | 4,000,000 | 10,000,000 | 10,000,000 | 0 | 90,657,921 |
| | | Org Subtotal | 24,202,921 | 20,005,000 | 13,450,000 | 9,000,000 | 4,000,000 | 10,000,000 | 10,000,000 | 0 | 90,657,921 |
| 1445 | 4420 | SW ORANGE CO EFFLUENT DISPOSA | 34,416,496 | 1,770,000 | 1,200,000 | 600,000 | 0 | 0 | 0 | 0 | 37,986,496 |
| | | Org Subtotal | 34,416,496 | 1,770,000 | 1,200,000 | 600,000 | 0 | 0 | 0 | 0 | 37,986,496 |
| 1483 | 4420 | EASTERN WASTEWATER REUSE | 9,765,796 | 243,800 | 1,430,000 | 1,185,000 | 2,110,000 | 1,004,668 | 70,000 | 839,200 | 16,648,464 |
| | | Org Subtotal | 9,765,796 | 243,800 | 1,430,000 | 1,185,000 | 2,110,000 | 1,004,668 | 70,000 | 839,200 | 16,648,464 |

**FIVE YEAR CAPITAL IMPROVEMENTS PROGRAM - BY DEPARTMENT / DIVISION
FY 2003/04 - FY 2007/08 PROPOSED BUDGET**

| <i>ORG</i> | <i>FUND</i> | <i>PROJECT NAME</i> | <i>PRIOR YEARS EXPENDITURES</i> | <i>CURRENT BUDGET @ 6/30/03 FY 02-03</i> | <i>PROPOSED BUDGET FY 03-04</i> | <i>PROPOSED BUDGET FY 04-05</i> | <i>REQ BUDGET FY 05-06</i> | <i>REQ BUDGET FY 06-07</i> | <i>REQ BUDGET FY 07-08</i> | <i>REQ FUTURE YEARS</i> | <i>PROPOSED PROJECT COST</i> |
|------------|-------------|-------------------------------|---|--|---|---|------------------------------------|------------------------------------|------------------------------------|---------------------------------|--------------------------------------|
| 1496 | 4420 | NORTHWEST SERVICE AREA REUSE | 2,453,585 | 5,902,000 | 3,520,000 | 3,370,000 | 1,530,000 | 235,000 | 200,000 | 0 | 17,210,585 |
| | | Org Subtotal | 2,453,585 | 5,902,000 | 3,520,000 | 3,370,000 | 1,530,000 | 235,000 | 200,000 | 0 | 17,210,585 |
| 1502 | 4420 | PUMPING REHAB II | 1,686,036 | 2,689,500 | 2,605,000 | 775,000 | 410,000 | 2,000,000 | 2,000,000 | 7,801,049 | 19,966,585 |
| | | Org Subtotal | 1,686,036 | 2,689,500 | 2,605,000 | 775,000 | 410,000 | 2,000,000 | 2,000,000 | 7,801,049 | 19,966,585 |
| 1504 | 4420 | TRANS. RELATED WASTEWATER REL | 0 | 38,000 | 270,000 | 540,000 | 574,000 | 635,000 | 600,000 | 937,000 | 3,594,000 |
| | | Org Subtotal | 0 | 38,000 | 270,000 | 540,000 | 574,000 | 635,000 | 600,000 | 937,000 | 3,594,000 |
| 1505 | 4420 | SEPTIC TANK RETROFIT | 6,441,578 | 2,859,800 | 3,301,200 | 3,221,288 | 2,000,000 | 1,000,000 | 1,000,000 | 4,600,000 | 24,423,866 |
| | | Org Subtotal | 6,441,578 | 2,859,800 | 3,301,200 | 3,221,288 | 2,000,000 | 1,000,000 | 1,000,000 | 4,600,000 | 24,423,866 |
| 1507 | 4420 | HORIZONS WEST WASTEWATER SYS | 1,570,698 | 767,500 | 200,000 | 250,000 | 50,000 | 305,000 | 575,000 | 7,858,650 | 11,576,848 |
| | | Org Subtotal | 1,570,698 | 767,500 | 200,000 | 250,000 | 50,000 | 305,000 | 575,000 | 7,858,650 | 11,576,848 |
| 1509 | 4420 | SOUTHERN WASTE WATER COLLECTI | 4,946,367 | 6,108,287 | 3,504,960 | 1,041,180 | 1,003,713 | 189,378 | 50,000 | 0 | 16,843,885 |
| | | Org Subtotal | 4,946,367 | 6,108,287 | 3,504,960 | 1,041,180 | 1,003,713 | 189,378 | 50,000 | 0 | 16,843,885 |
| 1510 | 4420 | EASTERN WASTEWATER COLLECTIO | 5,581,061 | 2,025,000 | 1,408,000 | 395,000 | 450,000 | 1,165,000 | 828,000 | 0 | 11,852,061 |
| | | Org Subtotal | 5,581,061 | 2,025,000 | 1,408,000 | 395,000 | 450,000 | 1,165,000 | 828,000 | 0 | 11,852,061 |
| 1511 | 4420 | NORTHWEST WASTEWATER COLLEC | 1,756,864 | 1,440,700 | 273,700 | 292,000 | 510,000 | 902,953 | 1,195,000 | 0 | 6,371,217 |
| | | Org Subtotal | 1,756,864 | 1,440,700 | 273,700 | 292,000 | 510,000 | 902,953 | 1,195,000 | 0 | 6,371,217 |
| 1521 | 4420 | NARCOOSEE RD/MOSSPK FORCE MA | 202,698 | 677,600 | 0 | 0 | 0 | 0 | 0 | 0 | 880,298 |
| | | Org Subtotal | 202,698 | 677,600 | 0 | 0 | 0 | 0 | 0 | 0 | 880,298 |
| 1526 | 4420 | UNIVERSITY SHORES INTERCONNEC | 1,084,137 | 170,000 | 0 | 0 | 0 | 0 | 0 | 0 | 1,254,137 |
| | | Org Subtotal | 1,084,137 | 170,000 | 0 | 0 | 0 | 0 | 0 | 0 | 1,254,137 |
| 1527 | 4420 | WASTEWATER FACIL R&R PROJECTS | 852,219 | 142,000 | 500,000 | 100,000 | 200,000 | 200,000 | 200,000 | 1,829,977 | 4,024,196 |
| | | Org Subtotal | 852,219 | 142,000 | 500,000 | 100,000 | 200,000 | 200,000 | 200,000 | 1,829,977 | 4,024,196 |

12-17

**FIVE YEAR CAPITAL IMPROVEMENTS PROGRAM - BY DEPARTMENT / DIVISION
FY 2003/04 - FY 2007/08 PROPOSED BUDGET**

| <i>ORG</i> | <i>FUND</i> | <i>PROJECT NAME</i> | <i>PRIOR YEARS EXPENDITURES</i> | <i>CURRENT BUDGET @ 6/30/03 FY 02-03</i> | <i>PROPOSED BUDGET FY 03-04</i> | <i>PROPOSED BUDGET FY 04-05</i> | <i>REQ BUDGET FY 05-06</i> | <i>REQ BUDGET FY 06-07</i> | <i>REQ BUDGET FY 07-08</i> | <i>REQ FUTURE YEARS</i> | <i>PROPOSED PROJECT COST</i> |
|--------------|-------------|-------------------------------|---|--|---|---|------------------------------------|------------------------------------|------------------------------------|---------------------------------|--------------------------------------|
| 1536 | 4420 | CAPITAL REUSE METER INSTALL | 181,680 | 150,000 | 150,000 | 100,000 | 100,000 | 100,000 | 100,000 | 1,625,000 | 2,506,680 |
| | | Org Subtotal | 181,680 | 150,000 | 150,000 | 100,000 | 100,000 | 100,000 | 100,000 | 1,625,000 | 2,506,680 |
| 1538 | 4420 | EASTERN WTR RECLAMATION EXPAN | 540,971 | 500,000 | 1,300,000 | 3,000,000 | 6,000,000 | 14,000,000 | 7,000,000 | 0 | 32,340,971 |
| | | Org Subtotal | 540,971 | 500,000 | 1,300,000 | 3,000,000 | 6,000,000 | 14,000,000 | 7,000,000 | 0 | 32,340,971 |
| 1539 | 4420 | FORCE MAIN REHABILITATION | 0 | 34,000 | 100,000 | 1,100,000 | 1,300,000 | 300,000 | 300,000 | 14,280,000 | 17,414,000 |
| | | Org Subtotal | 0 | 34,000 | 100,000 | 1,100,000 | 1,300,000 | 300,000 | 300,000 | 14,280,000 | 17,414,000 |
| 1541 | 4420 | PARK MANOR WASTE WATER SYSTE | 5,775 | 15,000 | 100,000 | 150,000 | 0 | 0 | 0 | 0 | 270,775 |
| | | Org Subtotal | 5,775 | 15,000 | 100,000 | 150,000 | 0 | 0 | 0 | 0 | 270,775 |
| 1542 | 4420 | SOUTHWEST SERVICE AREA REUSE | 0 | 0 | 50,000 | 50,000 | 50,000 | 50,000 | 50,000 | 1,000,000 | 1,250,000 |
| | | Org Subtotal | 0 | 0 | 50,000 | 50,000 | 50,000 | 50,000 | 50,000 | 1,000,000 | 1,250,000 |
| 1546 | 4420 | ZELLWOOD NORTH WASTEWATER SE | 0 | 210,000 | 400,000 | 970,000 | 190,000 | 0 | 0 | 10,000 | 1,780,000 |
| | | Org Subtotal | 0 | 210,000 | 400,000 | 970,000 | 190,000 | 0 | 0 | 10,000 | 1,780,000 |
| | | DIVISION SUBTOTAL | 201,142,673 | 55,338,384 | 47,436,010 | 37,681,468 | 27,742,713 | 36,251,999 | 30,363,000 | 74,207,757 | 510,164,004 |
| WATER | | | | | | | | | | | |
| 1447 | 4420 | DEMOL WTR PLTS/C-W | 0 | 89,600 | 363,400 | 0 | 0 | 0 | 0 | 496,140 | 949,140 |
| | | Org Subtotal | 0 | 89,600 | 363,400 | 0 | 0 | 0 | 0 | 496,140 | 949,140 |
| 1448 | 4420 | WTR DIST MODS/C-W | 16,659,867 | 4,135,000 | 3,432,000 | 1,773,000 | 1,450,000 | 2,355,000 | 2,792,000 | 5,000,000 | 37,596,867 |
| | | Org Subtotal | 16,659,867 | 4,135,000 | 3,432,000 | 1,773,000 | 1,450,000 | 2,355,000 | 2,792,000 | 5,000,000 | 37,596,867 |
| 1450 | 4420 | EASTERN WATER TRANS. IMP. | 28,757,001 | 2,669,000 | 2,230,000 | 800,000 | 1,100,000 | 4,726,000 | 4,508,000 | 9,315,520 | 54,105,521 |
| | | Org Subtotal | 28,757,001 | 2,669,000 | 2,230,000 | 800,000 | 1,100,000 | 4,726,000 | 4,508,000 | 9,315,520 | 54,105,521 |
| 1453 | 4420 | TRANSP RELOC WTR/C-W | 13,141,280 | 760,000 | 981,000 | 960,000 | 1,000,000 | 0 | 80,000 | 0 | 16,922,280 |
| | | Org Subtotal | 13,141,280 | 760,000 | 981,000 | 960,000 | 1,000,000 | 0 | 80,000 | 0 | 16,922,280 |
| 1463 | 4420 | WESTERN WATER TRANS. IMP. | 19,912,425 | 2,407,000 | 1,945,000 | 860,000 | 710,000 | 1,205,000 | 1,393,000 | 0 | 28,432,425 |
| | | Org Subtotal | 19,912,425 | 2,407,000 | 1,945,000 | 860,000 | 710,000 | 1,205,000 | 1,393,000 | 0 | 28,432,425 |

12-18

**FIVE YEAR CAPITAL IMPROVEMENTS PROGRAM - BY DEPARTMENT / DIVISION
FY 2003/04 - FY 2007/08 PROPOSED BUDGET**

| <i>ORG</i> | <i>FUND</i> | <i>PROJECT NAME</i> | <i>PRIOR YEARS EXPENDITURES</i> | <i>CURRENT BUDGET @ 6/30/03 FY 02-03</i> | <i>PROPOSED BUDGET FY 03-04</i> | <i>PROPOSED BUDGET FY 04-05</i> | <i>REQ BUDGET FY 05-06</i> | <i>REQ BUDGET FY 06-07</i> | <i>REQ BUDGET FY 07-08</i> | <i>REQ FUTURE YEARS</i> | <i>PROPOSED PROJECT COST</i> |
|------------|-------------|--------------------------------|---|--|---|---|------------------------------------|------------------------------------|------------------------------------|---------------------------------|--------------------------------------|
| 1474 | 4420 | NEW METER INSTALLATION | 11,404,855 | 1,001,000 | 1,000,000 | 1,000,000 | 1,000,000 | 1,000,000 | 1,000,000 | 5,000,000 | 22,405,855 |
| | | Org Subtotal | 11,404,855 | 1,001,000 | 1,000,000 | 1,000,000 | 1,000,000 | 1,000,000 | 1,000,000 | 5,000,000 | 22,405,855 |
| 1482 | 4420 | TRANSPORTATION RELATED WATER | 0 | 20,000 | 60,000 | 1,410,000 | 330,000 | 125,000 | 280,000 | 555,000 | 2,780,000 |
| | | Org Subtotal | 0 | 20,000 | 60,000 | 1,410,000 | 330,000 | 125,000 | 280,000 | 555,000 | 2,780,000 |
| 1492 | 4420 | WESTERN REG WATER TRT FAC PHII | 17,217,490 | 241,000 | 65,000 | 10,000 | 0 | 0 | 0 | 0 | 17,533,490 |
| | | Org Subtotal | 17,217,490 | 241,000 | 65,000 | 10,000 | 0 | 0 | 0 | 0 | 17,533,490 |
| 1497 | 4420 | EASTERN REG WATER TRT FAC PHII | 7,238,207 | 1,352,000 | 6,000,000 | 14,500,000 | 14,030,000 | 8,570,000 | 10,000,000 | 0 | 61,690,207 |
| | | Org Subtotal | 7,238,207 | 1,352,000 | 6,000,000 | 14,500,000 | 14,030,000 | 8,570,000 | 10,000,000 | 0 | 61,690,207 |
| 1498 | 4420 | SOUTHERN REG WELLFIELD&WTR PL | 13,871 | 115,000 | 145,000 | 900,000 | 1,650,000 | 4,300,000 | 7,950,000 | 107,250 | 15,181,121 |
| | | Org Subtotal | 13,871 | 115,000 | 145,000 | 900,000 | 1,650,000 | 4,300,000 | 7,950,000 | 107,250 | 15,181,121 |
| 1506 | 4420 | HORIZONS WEST TRANSMISSION SY | 2,455,232 | 830,000 | 2,330,000 | 1,780,000 | 660,000 | 1,400,000 | 1,550,000 | 1,118,977 | 12,124,209 |
| | | Org Subtotal | 2,455,232 | 830,000 | 2,330,000 | 1,780,000 | 660,000 | 1,400,000 | 1,550,000 | 1,118,977 | 12,124,209 |
| 1508 | 4420 | SOUTH WATER TRANSMISSION IMP. | 2,638,622 | 2,411,127 | 1,796,000 | 813,000 | 1,200,000 | 2,970,000 | 2,700,000 | 0 | 14,528,749 |
| | | Org Subtotal | 2,638,622 | 2,411,127 | 1,796,000 | 813,000 | 1,200,000 | 2,970,000 | 2,700,000 | 0 | 14,528,749 |
| 1512 | 4420 | SJRWMD REGIONAL CUP-PERMIT | 1,438 | 1,410,000 | 500,000 | 500,000 | 500,000 | 500,000 | 500,000 | 0 | 3,911,438 |
| | | Org Subtotal | 1,438 | 1,410,000 | 500,000 | 500,000 | 500,000 | 500,000 | 500,000 | 0 | 3,911,438 |
| 1515 | 4420 | PLYMOUTH WATER MAIN INTERCON | 278 | 30,000 | 111,000 | 180,000 | 0 | 0 | 0 | 0 | 321,278 |
| | | Org Subtotal | 278 | 30,000 | 111,000 | 180,000 | 0 | 0 | 0 | 0 | 321,278 |
| 1516 | 4420 | ZELLWOOD WATER MAIN | 4,201 | 162,400 | 1,000,000 | 890,000 | 0 | 0 | 0 | 0 | 2,056,601 |
| | | Org Subtotal | 4,201 | 162,400 | 1,000,000 | 890,000 | 0 | 0 | 0 | 0 | 2,056,601 |
| 1530 | 4420 | WATER-ALTERNATE DISINFECTION | 155,784 | 2,902,000 | 1,250,000 | 3,250,000 | 1,000,000 | 3,250,000 | 0 | 0 | 11,807,784 |
| | | Org Subtotal | 155,784 | 2,902,000 | 1,250,000 | 3,250,000 | 1,000,000 | 3,250,000 | 0 | 0 | 11,807,784 |

12-19

**FIVE YEAR CAPITAL IMPROVEMENTS PROGRAM - BY DEPARTMENT / DIVISION
FY 2003/04 - FY 2007/08 PROPOSED BUDGET**

12-20

| <i>ORG</i> | <i>FUND</i> | <i>PROJECT NAME</i> | <i>PRIOR YEARS EXPENDITURES</i> | <i>CURRENT BUDGET @ 6/30/03 FY 02-03</i> | <i>PROPOSED BUDGET FY 03-04</i> | <i>PROPOSED BUDGET FY 04-05</i> | <i>REQ BUDGET FY 05-06</i> | <i>REQ BUDGET FY 06-07</i> | <i>REQ BUDGET FY 07-08</i> | <i>REQ FUTURE YEARS</i> | <i>PROPOSED PROJECT COST</i> |
|-------------|-------------|--------------------------------|---|--|---|---|------------------------------------|------------------------------------|------------------------------------|---------------------------------|--------------------------------------|
| <i>1531</i> | 4420 | WATER INTERCONNECTIONS | 0 | 10,000 | 10,000 | 0 | 0 | 0 | 0 | 0 | 20,000 |
| | | Org Subtotal | 0 | 10,000 | 10,000 | 0 | 0 | 0 | 0 | 0 | 20,000 |
| <i>1532</i> | 4420 | W REG WATER TREAT FAC PH III | 0 | 90,000 | 850,000 | 1,100,000 | 2,000,000 | 0 | 0 | 2,915,000 | 6,955,000 |
| | | Org Subtotal | 0 | 90,000 | 850,000 | 1,100,000 | 2,000,000 | 0 | 0 | 2,915,000 | 6,955,000 |
| <i>1533</i> | 4420 | WATER RENEWAL & REPLACEMENTS | 0 | 0 | 100,000 | 100,000 | 100,000 | 100,000 | 100,000 | 905,000 | 1,405,000 |
| | | Org Subtotal | 0 | 0 | 100,000 | 100,000 | 100,000 | 100,000 | 100,000 | 905,000 | 1,405,000 |
| <i>1534</i> | 4420 | FLUORIDATION MED/SM FACILITIES | 64,278 | 200,000 | 1,448,600 | 0 | 0 | 0 | 0 | 0 | 1,712,878 |
| | | Org Subtotal | 64,278 | 200,000 | 1,448,600 | 0 | 0 | 0 | 0 | 0 | 1,712,878 |
| <i>1540</i> | 4420 | PARK MANOR WATER SYSTEMS IMPR | 14,950 | 22,800 | 0 | 0 | 0 | 0 | 0 | 50,000 | 87,750 |
| | | Org Subtotal | 14,950 | 22,800 | 0 | 0 | 0 | 0 | 0 | 50,000 | 87,750 |
| <i>1544</i> | 4420 | WATER SCADA & SECURITY IMPROV | 175,774 | 200,000 | 300,000 | 800,000 | 0 | 0 | 0 | 0 | 1,475,774 |
| | | Org Subtotal | 175,774 | 200,000 | 300,000 | 800,000 | 0 | 0 | 0 | 0 | 1,475,774 |
| <i>1545</i> | 4420 | PRIVATE WELL RETROFIT PROGRAM | 0 | 221,000 | 200,000 | 500,000 | 500,000 | 500,000 | 0 | 3,432,000 | 5,353,000 |
| | | Org Subtotal | 0 | 221,000 | 200,000 | 500,000 | 500,000 | 500,000 | 0 | 3,432,000 | 5,353,000 |
| | | DIVISION SUBTOTAL | 119,855,552 | 21,278,927 | 26,117,000 | 32,126,000 | 27,230,000 | 31,001,000 | 32,853,000 | 28,894,887 | 319,356,366 |
| | | DEPARTMENT SUBTOTAL | 368,154,753 | 100,031,464 | 102,881,910 | 95,592,338 | 74,036,413 | 80,160,179 | 74,793,011 | 144,809,194 | 1,040,459,262 |